

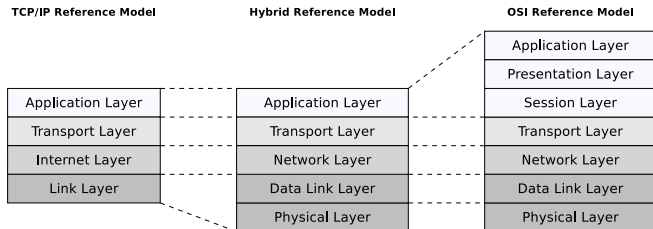
Network Components

Prof. Dr. Christian Baun

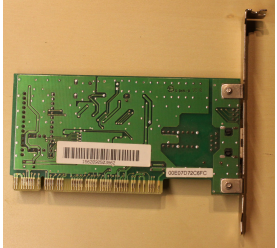
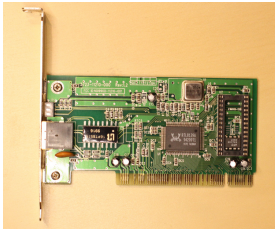
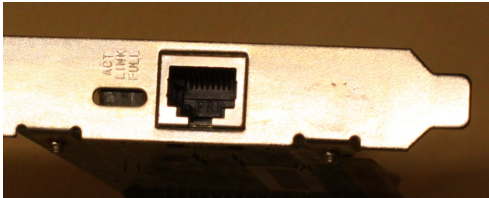
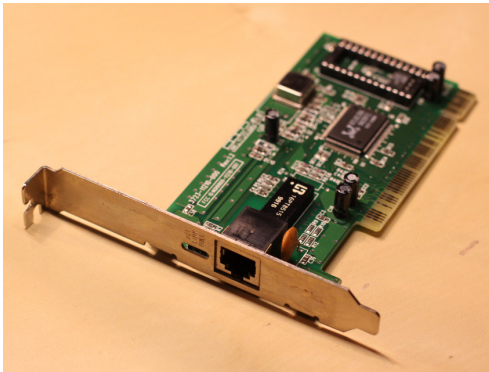
Frankfurt University of Applied Sciences
(1971–2014: Fachhochschule Frankfurt am Main)
Fachbereich Informatik und Ingenieurwissenschaften
christianbaun@fb2.fra-uas.de

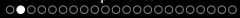
Task

- The slides of this slide set contain photos of various network components
- Try to assign the network components to the layers in the hybrid reference model

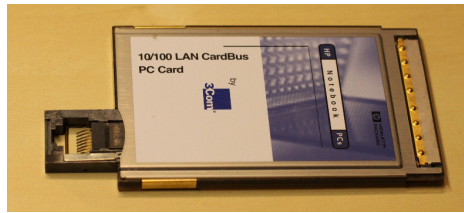
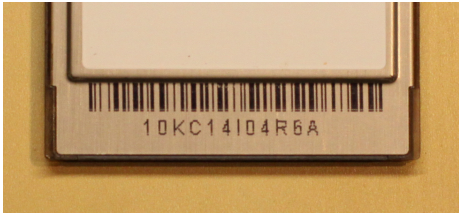


Component 1

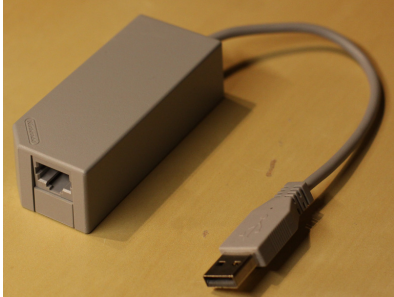
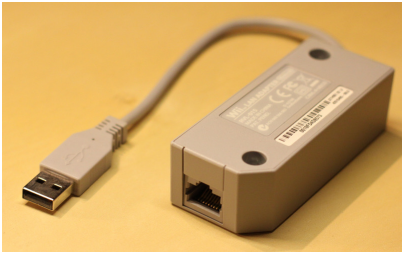




Component 2



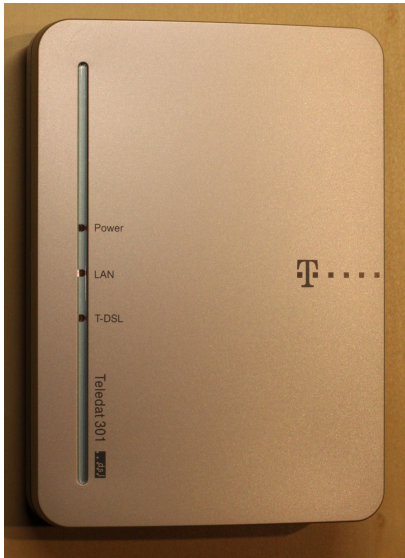
Component 3



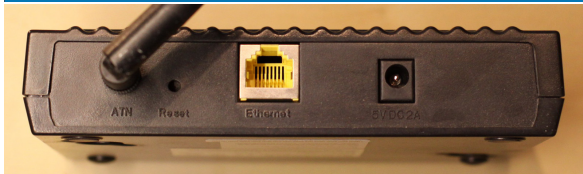
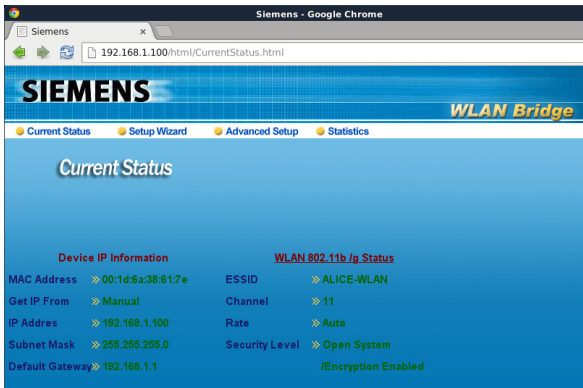
Component 4



Component 5



Component 6



Component 7



Component 8



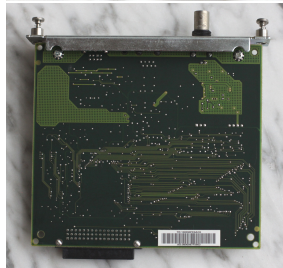
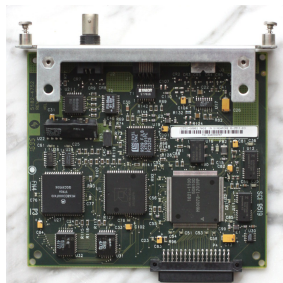
Component 9

```
# telnet 10.0.0.5
Trying 10.0.0.5...
Connected to 10.0.0.5
Escape character is '^['.
```

HP JetDirect

Please type "?" for HELP, or "/" for current settings

```
> /
===JetDirect Telnet Configuration===
Firmware Rev.   : A.08.49
MAC Address     : 08:00:09:7f:56:63
Config By      : USER SPECIFIED
IP Address      : 10.0.0.5
Subnet Mask     : 255.255.255.0
Default Gateway : 10.0.0.1
Syslog Server   : Not Specified
Idle Timeout    : 90 Seconds
Set Cmnty Name  : Not Specified
Host Name       : LASERJET
DHCP Config     : Disabled
```



Component 10



Component 12

```
$ telnet 192.0.0.192
Trying 192.0.0.192...
Connected to 192.0.0.192.
Escape character is '^['.
```

HP JetDirect

Please type "?" for HELP, or "/" for current settings
> /

===JetDirect Telnet Configuration===

```
Firmware Rev.   : F.08.20
MAC Address     : 00:30:6e:fc:97:c8
Config By      : Default IP
```

```
IP Address      : 192.0.0.192
Subnet Mask    : Not Specified
Default Gateway : 192.0.0.192
Syslog Server  : Not Specified
Idle Timeout   : 90 Seconds
Set Cmnty Name : Not Specified
Host Name     : Not Specified
```

```
DHCP Config    : Enabled
Passwd        : Disabled
IPX/SPX       : Enabled
DLC/LLC       : Enabled
Banner page   : Enabled
```

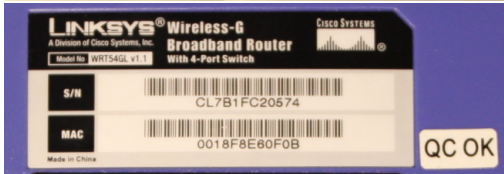
S/N:SG421BB4AA
AD:00306EFC97C8



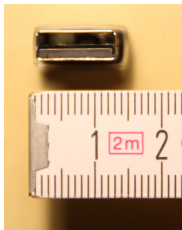
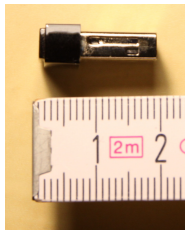
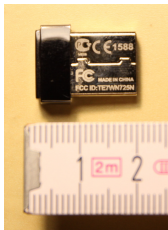
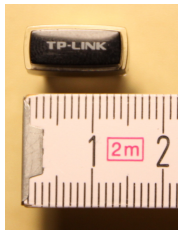
Component 13



Component 14

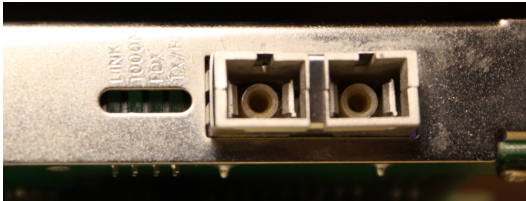
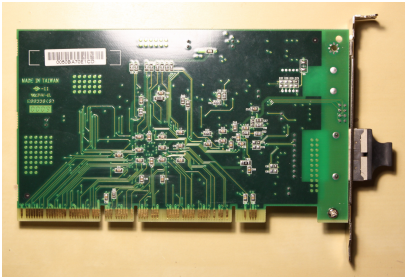
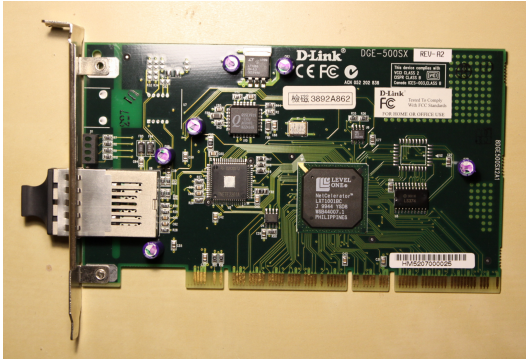


Component 15



```
[221411.207865] usb 1-2: USB disconnect, device number 90
[221703.999606] usb 1-1: USB disconnect, device number 91
[221732.387524] usb 1-1: new high-speed USB device number 92 using xhci_hcd
[221732.528114] usb 1-1: New USB device found, idVendor=0bda, idProduct=8179
[221732.528118] usb 1-1: New USB device strings: Mfr=1, Product=2, SerialNumber=3
[221732.528121] usb 1-1: Product: 802.11n NIC
[221732.528123] usb 1-1: Manufacturer: Realtek
[221732.528126] usb 1-1: SerialNumber: 00E04C0001
[221733.120663] r8188eu: module is from the staging directory, the quality is unknown, you have been warned.
[221733.124373] Chip Version Info: CHIP_8188E_Normal_Chip_TSMC_A_CUT_1T1R_RomVer(0)
[221733.150775] usbcore: registered new interface driver r8188eu
[221733.152618] r8188eu 1-1:1.0 wlx6466b31c4fbc: renamed from wlan0
[221733.177891] IPv6: ADDRCONF(NETDEV_UP): wlx6466b31c4fbc: link is not ready
[221733.178917] r8188eu 1-1:1.0: firmware: direct-loading firmware rtlwifi/rtl8188eu.fw.bin
[221733.544034] MAC Address = 64:66:b3:1c:4f:bc
```

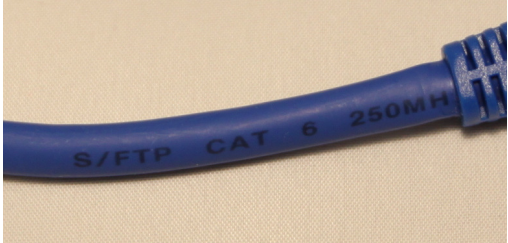
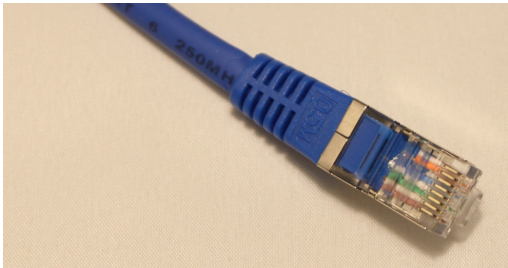
Component 16



Component 17



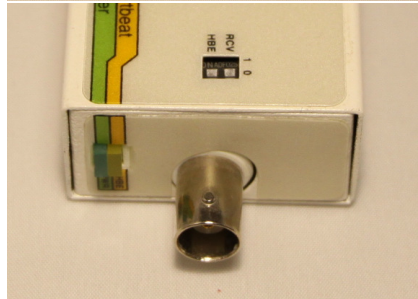
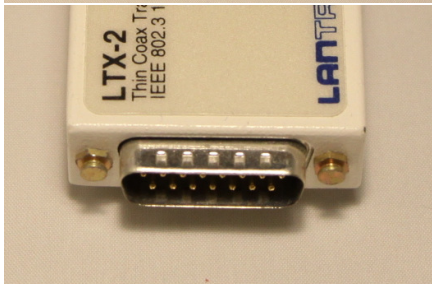
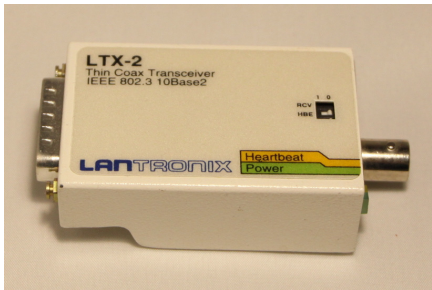
Component 18



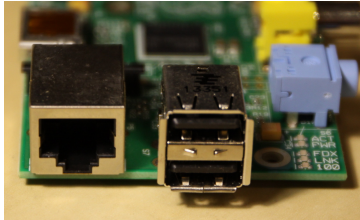
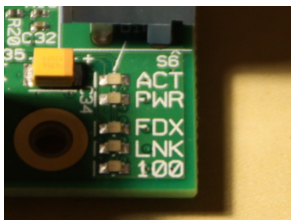
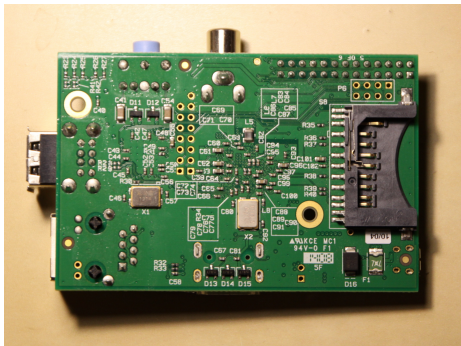
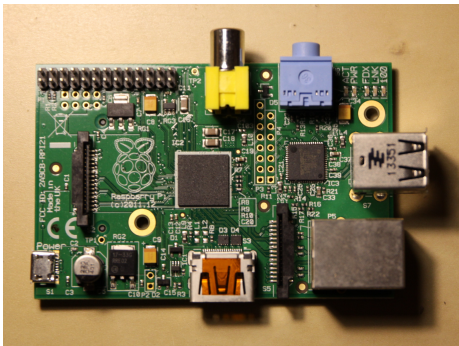
Component 19



Component 20



Component 21



Component 22



- Components of dry air:
 - Nitrogen (N_2)
 - Oxygen (O_2)
 - Argon (Ar)
 - Carbon dioxide (CO_2)
 - Neon (Ne)
 - Helium (He)
 - Methane (CH_4)
 - Krypton (Kr)
 - Hydrogen (H_2)
 - ...